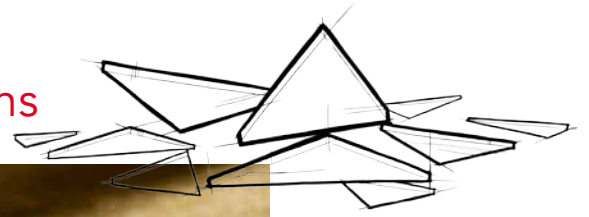


FABROCK™ LT

Board Insulation for OEM Applications



ROCKWOOL FABROCK™ LT is a semi-rigid stone wool insulation board designed to be fabricated into different dimensions to meet the aesthetic or functional needs of your application.

It is non-combustible and will not develop smoke or promote flame spread, even when directly exposed to fire. It also repels and drains water away from the product, and will completely dry out while maintaining its original physical properties.

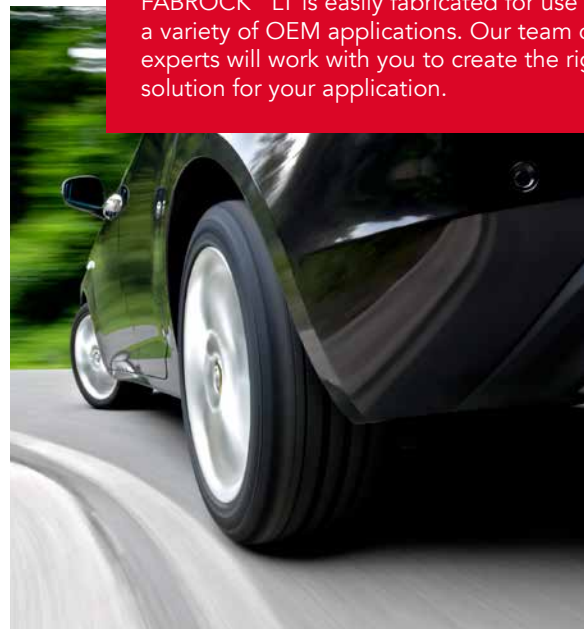
The unique non-directional structure of ROCKWOOL stone wool insulation is denser than traditional insulations. This reduces airflow and sound transmissions. Higher airflow resistivity means better sound attenuation.

FABROCK™ LT is ideal as the base for laminated parking garage insulation solutions.

Learn more at rockwool.com

Versatility

FABROCK™ LT is easily fabricated for use in a variety of OEM applications. Our team of experts will work with you to create the right solution for your application.



FABROCK™ LT

Board Insulation for OEM Applications

Technical Data Sheet

Board Insulation 15080* • Acoustic Board Insulation 09 81 13**
Mineral Wool Board Insulation 07 21 13**

ROCKWOOL FABROCK™ LT is a non-combustible, semi-rigid, water-repellent, stone wool insulation board designed for fabrication.

| | Performance | Test Standard | | | | | | | |
|------------------------|--|---|--------|--------|---------|---------|---------|-----|-----------|
| Compliance | Mineral Fiber Block and Board Thermal Insulation, Type IVB Compliant | ASTM C612 | | | | | | | |
| Reaction to Fire | Flame spread index = 0; Smoke development index = 0 Flame spread index = 0; Smoke development index = 0 Behaviour of materials at 750°C - Non Combustible Test for Non-Combustibility - Non Combustible Hot Surface Performance - 1200°F | ASTM E84 (UL 723) CAN/ULC S102 CAN/ULC S114 ASTM E136 ASTM C411 | | | | | | | |
| Density | Actual Density 3.5 lb/ft ³ (56 kg/m ³) | ASTM C303 | | | | | | | |
| Dimensional Stability | Linear Shrinkage 0.35% @ 1200°F | ASTM C356 | | | | | | | |
| Air Erosion | Maximum Air Velocity - 1000 fpm (5.08 m/s) | UL 181 | | | | | | | |
| Corrosion Resistance | Stress Corrosion Cracking Tendency of Austenitic Stainless Steel - Passed Corrosion of Steel - Passed | ASTM C795 ASTM C665 | | | | | | | |
| Thermal Resistance | R-Value / inch @ 75°F 4.1 hr.ft ² .F/Btu RSI value / 25.4 mm @ 24°C 0.72 m ² K/W | ASTM C518 (C177) | | | | | | | |
| Reaction to Moisture | Moisture Sorption by weight - 0.03% Determination of Fungi Resistance - Passed | ASTM C1104 ASTM C1338 | | | | | | | |
| Thickness Dimensions | Contact ROCKWOOL for sizing information (1-800-265-6878) | | | | | | | | |
| Acoustical Performance | Thickness | 125 Hz | 250 Hz | 500 Hz | 1000 Hz | 2000Hz | 4000 Hz | NRC | ASTM C423 |
| | 1.0" | 0.08 | 0.23 | 0.66 | 0.93 | 1.02 | 1.02 | 0.7 | |
| | 1.5" | 0.15 | 0.47 | 0.98 | 1.06 | 1.02 | 1.02 | 0.9 | |
| | 2" | 0.26 | 0.68 | 1.14 | 1.13 | 1.06 | 1.07 | 1 | |
| | 3" | 0.62 | 1.03 | 1.2 | 1.1 | 1.08 | 1.1 | 1.1 | |
| Transmission Loss (dB) | Thickness | 125 Hz | 250 Hz | 500 Hz | 1000 Hz | 2000 Hz | 4000 Hz | STC | ASTM E90 |
| | 2" | 6 | 6 | 9 | 12 | 16 | 21 | 13 | |
| | 4" | 8 | 7 | 13 | 17 | 23 | 28 | 17 | |

Issued 01-01-18
Supersedes 08-23-17

NOTE: *Master Format 1995 Edition **Master Format 2004 Edition. As ROCKWOOL has no control over installation design and workmanship, accessory materials or application conditions, ROCKWOOL does not warranty the performance or results of any installation containing ROCKWOOL's products. ROCKWOOL's overall liability and the remedies available are limited by the general terms and conditions of sale. This warranty is in lieu of all other warranties and conditions expressed or implied, including the warranties of merchantability and fitness for a particular purpose.



8024 Esquesing Line, Milton, ON L9T 6W3
Tel: 800-265-6878 • Fax: 800-991-0110
rockwool.com