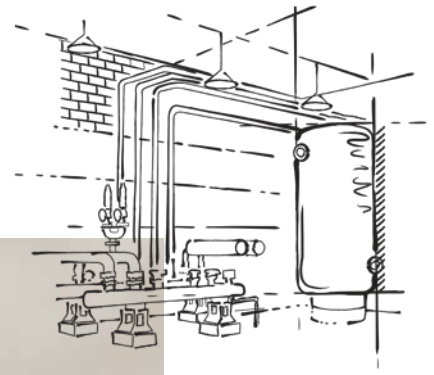


ROCKBOARD® 60

Multipurpose Board Insulation



ROCKWOOL ROCKBOARD® 60 is a premium, multi-purpose stone wool insulation board used in walls, ceilings and floors for acoustic and thermal applications.

ROCKBOARD® 60 is non-combustible and fire resistant, and will not produce toxic smoke or promote flame spread, even when exposed directly to a fire. This can add an extra degree of fire resistance and contribute to occupant protection.

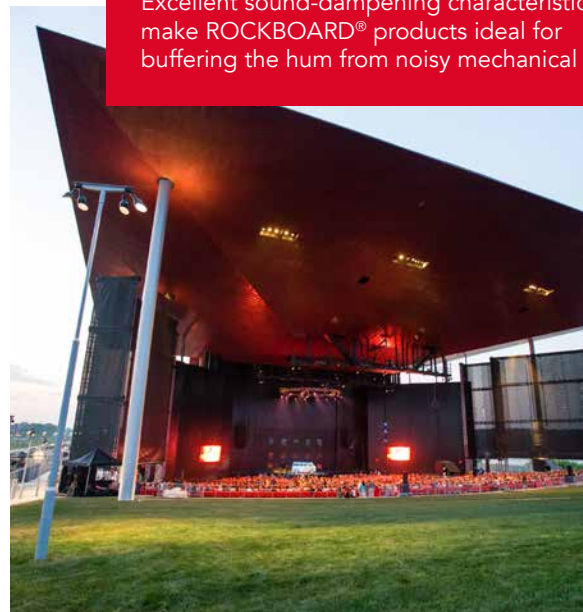
ROCKBOARD® products also maintain dimensional integrity under all conditions and, as a result, will not slump, shrink or expand with temperature.

ROCKBOARD® products can be surfaced with different facings to achieve optimal performance results. From mechanical rooms to sound studios to utility rooms, these products add a high-performance barrier to noise and fire.

Learn more at rockwool.com

Superior Acoustic Properties

Excellent sound-dampening characteristics make ROCKBOARD® products ideal for buffering the hum from noisy mechanical rooms.



ROCKBOARD® 60

Multipurpose Board Insulation

Technical Data Sheet

Board Insulation 07210* • Board Insulation 07 21 13**
Acoustic Board Insulation 09 81 13**

ROCKWOOL ROCKBOARD® 60 is a rigid, multi-purpose mineral wool insulation board.

	Performance	Test Standard																								
Compliance	Mineral Fiber Block and Board Thermal Insulation - Type IVB Compliant	ASTM C612																								
Reaction to Fire	Flame spread index = 0; Smoke development index = 0 Flame spread index = 0; Smoke development index = 0 Behaviour of materials at 750°C - Non Combustible Hot Surface Performance - 1200°F	ASTM E84 (UL 723) CAN/ULC S102 CAN/ULC S114 ASTM C411																								
Density	Actual Density - 6 lbs/ft ³ (96 kg/m ³)	ASTM C303																								
Dimensional Stability	Linear Shrinkage - <1% @ 1200°F	ASTM C356																								
Corrosion Resistance	Stress Corrosion Cracking Tendency of Austenitic Stainless Steel - Passed Corrosion of Steel - Passed	ASTM C795 ASTM C665																								
Thermal Resistance	R-Value / inch @ 75°F 4.3 hr.ft ² .F/Btu RSI value / 25.4 mm @ 24°C 0.75 m ² K/W	ASTM C518 (C177)																								
Reaction to Moisture	Moisture Sorption by weight - 0.07% Determination of Fungi Resistance - Passed	ASTM C1104 ASTM C1338																								
Compressive Strength	355psf (17kPa) @ 10% compression 585psf (28kPa) @ 25% compression	ASTM C165																								
Thickness Dimensions	Product is available in 2" through 4" offerings (50.8 mm - 101.6 mm) 24" x 48" (610 mm x 1219 mm)																									
Acoustical Performance	<table border="1"> <thead> <tr> <th>Thickness</th> <th>125 Hz</th> <th>250 Hz</th> <th>500 Hz</th> <th>1000 Hz</th> <th>2000Hz</th> <th>4000 Hz</th> <th>NRC</th> </tr> </thead> <tbody> <tr> <td>2"</td> <td>0.32</td> <td>0.81</td> <td>1.06</td> <td>1.02</td> <td>0.99</td> <td>1.04</td> <td>0.95</td> </tr> <tr> <td>3"</td> <td>0.78</td> <td>0.89</td> <td>1.04</td> <td>0.98</td> <td>1.01</td> <td>1.02</td> <td>1</td> </tr> </tbody> </table>	Thickness	125 Hz	250 Hz	500 Hz	1000 Hz	2000Hz	4000 Hz	NRC	2"	0.32	0.81	1.06	1.02	0.99	1.04	0.95	3"	0.78	0.89	1.04	0.98	1.01	1.02	1	ASTM C423
Thickness	125 Hz	250 Hz	500 Hz	1000 Hz	2000Hz	4000 Hz	NRC																			
2"	0.32	0.81	1.06	1.02	0.99	1.04	0.95																			
3"	0.78	0.89	1.04	0.98	1.01	1.02	1																			

Issued 01-01-18
Supersedes 08-23-17

NOTE: *Master Format 1995 Edition **Master Format 2004 Edition. As ROCKWOOL has no control over installation design and workmanship, accessory materials or application conditions, ROCKWOOL does not warranty the performance or results of any installation containing ROCKWOOL's products. ROCKWOOL's overall liability and the remedies available are limited by the general terms and conditions of sale. This warranty is in lieu of all other warranties and conditions expressed or implied, including the warranties of merchantability and fitness for a particular purpose.



8024 Esquesing Line, Milton, ON L9T 6W3
Tel: 800-265-6878 • Fax: 800-991-0110
rockwool.com