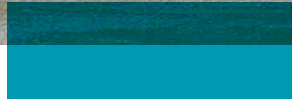
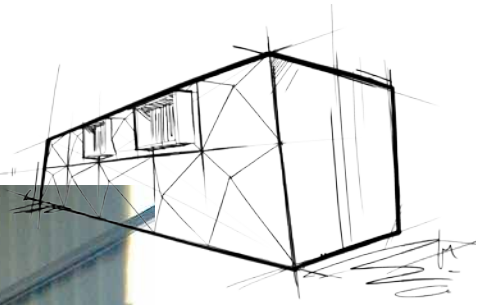


ROXUL SAFE™ 55

Metal Building Insulation



ROCKWOOL ROXUL SAFE™ 55 is a medium-density stone wool insulation for exterior and interior non-load-bearing, steel-faced firewall applications where a fire resistance rating is required. It is approved for use in a 2-hour fire rated system.

Designed to meet building codes in high-density areas, ROXUL SAFE™ 55 is non-combustible, withstanding temperatures up to 2150°F (1177°C), and will not produce toxic smoke or promote flame spread. As a result, it provides high-temperature fire protection, enhancing occupant safety, particularly when a fire separation wall is required.

It is also UL/ULC tested and approved for fire-rated assemblies.

ROCKWOOL offers single- or double-sided fire-rated assemblies. ROXUL SAFE™ 55 is ideally suited for zero lot line applications where buildings are in close proximity and fire safety is essential.

Learn more at [rockwool.com](https://www.rockwool.com)

Fire-resistant Material

A 2-hour fire resistance rating from the interior side allows builders to reduce the required separation between buildings.



ROXUL SAFE™ 55

Metal Building Insulation

Technical Data Sheet

Board Insulation 05080* • Board Insulation 07 21 13**
Metal Wall Panels 07 42 13**

ROCKWOOL ROXUL SAFE™ 55 is a mineral wool insulation board approved for use in metal building assemblies where a 2-hour fire resistance rating is required from one side or both sides of the wall.

	Performance	Test Standard
Compliance	Mineral Fiber Block and Board Thermal Insulation - Type IVB Compliant	ASTM C612
Reaction to Fire	Flame spread index = 0; Smoke developed index = 0 Flame spread index = 0; Smoke developed index = 0 Determination of Non Combustibility of Building Materials - Non Combustible Test for Non-Combustibility - Non Combustible ULC 2 hr rated from interior side - W606 ULC 2 hr rated from both sides - W611 UL 2 hr rated from interior side - U655 UL 2 hr rated from both sides - U659 Consult UL and ULC Directories for fire rated designs	ASTM E84 (UL 723) CAN/ULC S102 CAN/ULC S114 ASTM E136
Density	Nominal Density, Minimum - 4.5 lbs/ft ³ (72 kg/m ³)	ASTM C303
Thermal Resistance	R-Value / inch @ 75°F 4.2 hr.ft ² .F/Btu RSI value / 25.4 mm @ 24°C 0.74 m ² K/W	ASTM C518 (C177)
Dimensional Stability	Linear Shrinkage - <1% @ 1200°F	ASTM C356
Corrosion Resistance	Stress Corrosion Cracking Tendency of Austenitic Stainless Steel - Passed Corrosion of Steel - Passed	ASTM C795 ASTM C665
Reaction to Moisture	Moisture Sorption by weight - 0.04% Determination of Fungi Resistance - Passed	ASTM C1104 ASTM C1338
Thickness Dimensions	Product is available in 4" thickness (101.6 mm) 24" x 48" (610 mm x 1219 mm), 31.5" x 48" (800 mm x 1219 mm), 32" x 48" (813 mm x 1219 mm)	



Issued 01-01-18
Supersedes 08-23-17

NOTE: *Master Format 1995 Edition **Master Format 2004 Edition. As ROCKWOOL has no control over installation design and workmanship, accessory materials or application conditions, ROCKWOOL does not warranty the performance or results of any installation containing ROCKWOOL's products. ROCKWOOL's overall liability and the remedies available are limited by the general terms and conditions of sale. This warranty is in lieu of all other warranties and conditions expressed or implied, including the warranties of merchantability and fitness for a particular purpose.